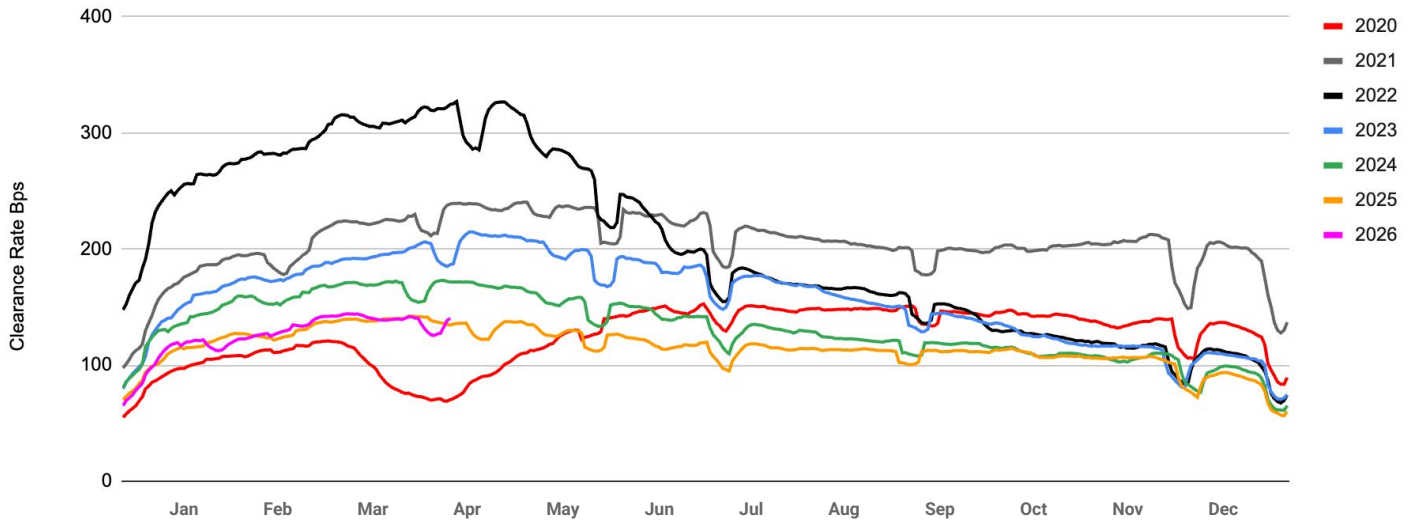




# Macro Charts

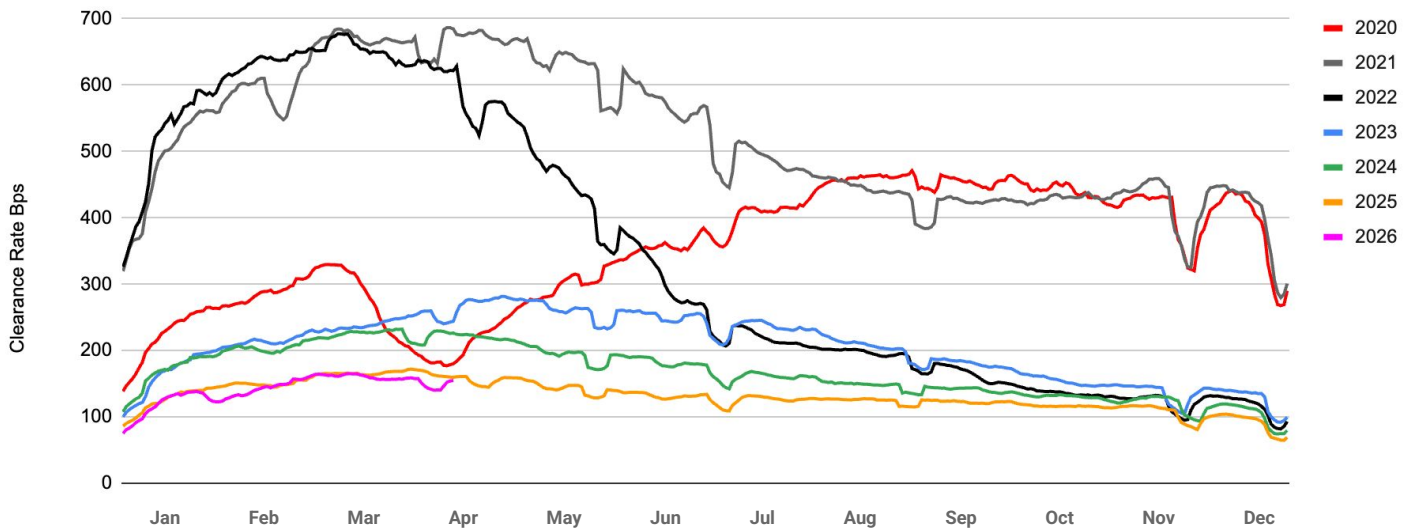
### Trailing 7-Day MLS Clearance Rate<sup>1</sup>

MLS Data Filtered to Opendoor Markets and Buybox



### Trailing 7-Day MLS OD Price-Weighted Gross Clearance Rate<sup>2</sup>

MLS Data Filtered to Opendoor Markets and Buybox

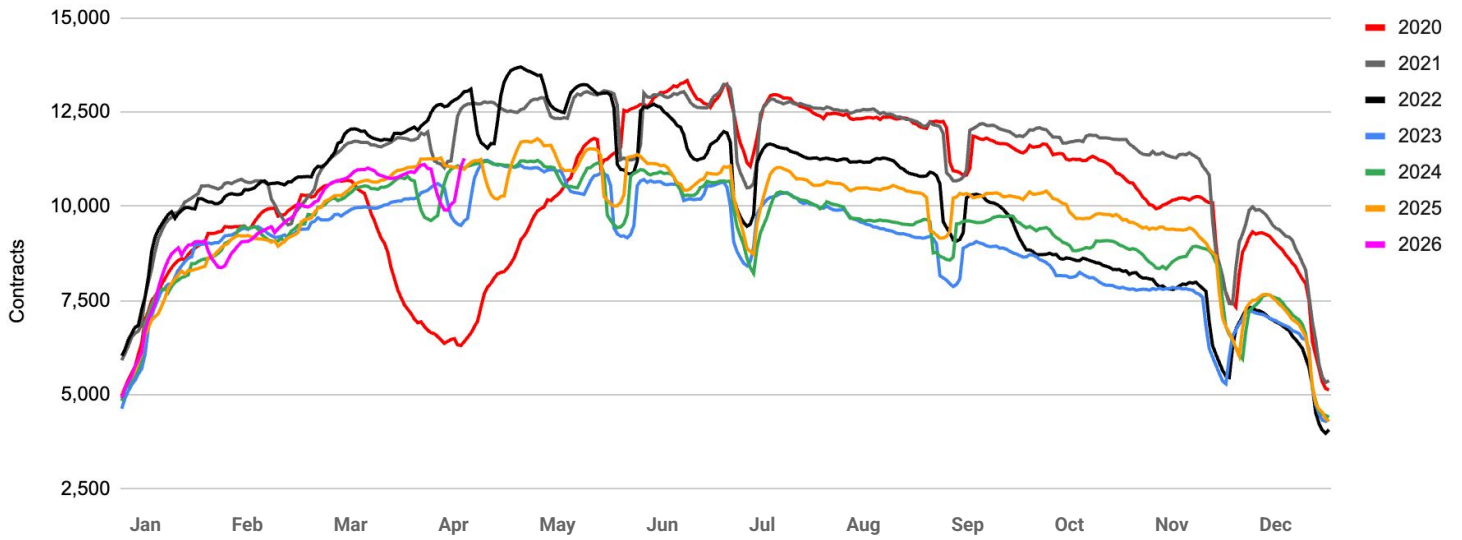


<sup>1</sup> Note: MLS Clearance Rate is defined as the number of daily contracts that enter pending status on the Multiple Listing Service (i.e. market listings), filtered for Opendoor's markets and buybox, divided by the number of active listings on the Multiple Listing Service, filtered for the same markets and buybox.

<sup>2</sup> Note: MLS OD Price-Weighted Gross Clearance Rate is defined as the number of daily contracts that enter pending status on the Multiple Listing Service (i.e. market listings), filtered for Opendoor's markets and buybox, divided by the number of active listings on the Multiple Listing Service, filtered for the same markets and buybox, and weighted by Opendoor's price point and market mix, defined by the distribution of Opendoor's listed inventory across price points and markets.

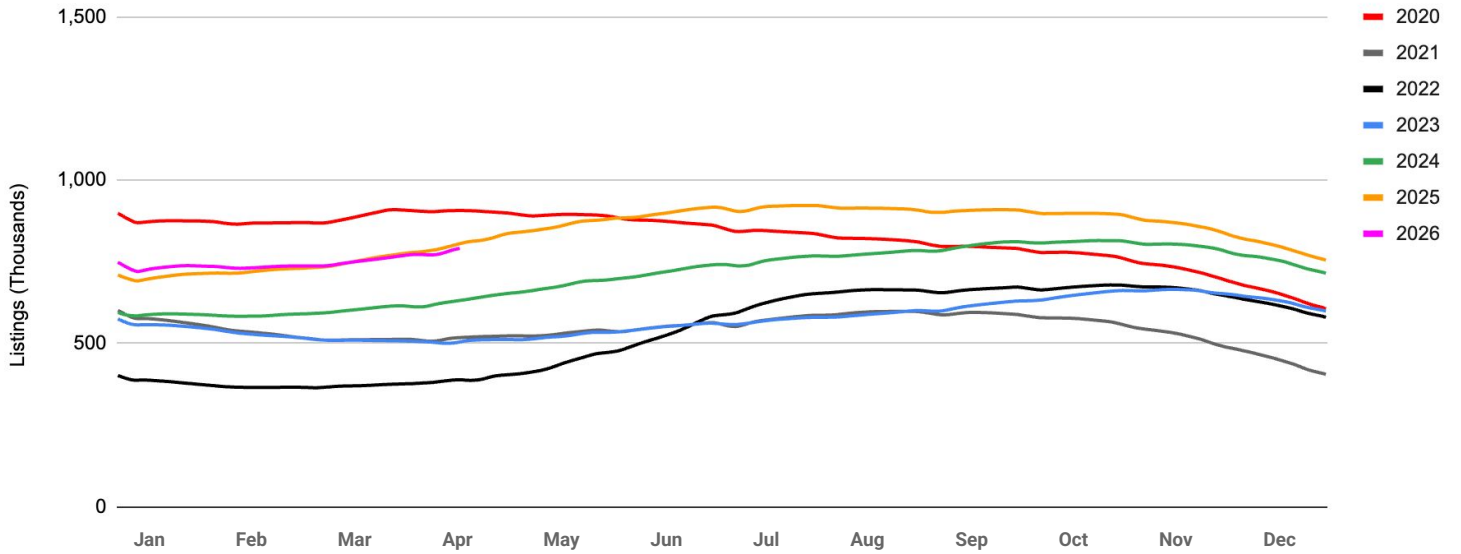
### Trailing 7-Day MLS Contracts

MLS Data Filtered to Opendoor Markets and Buybox



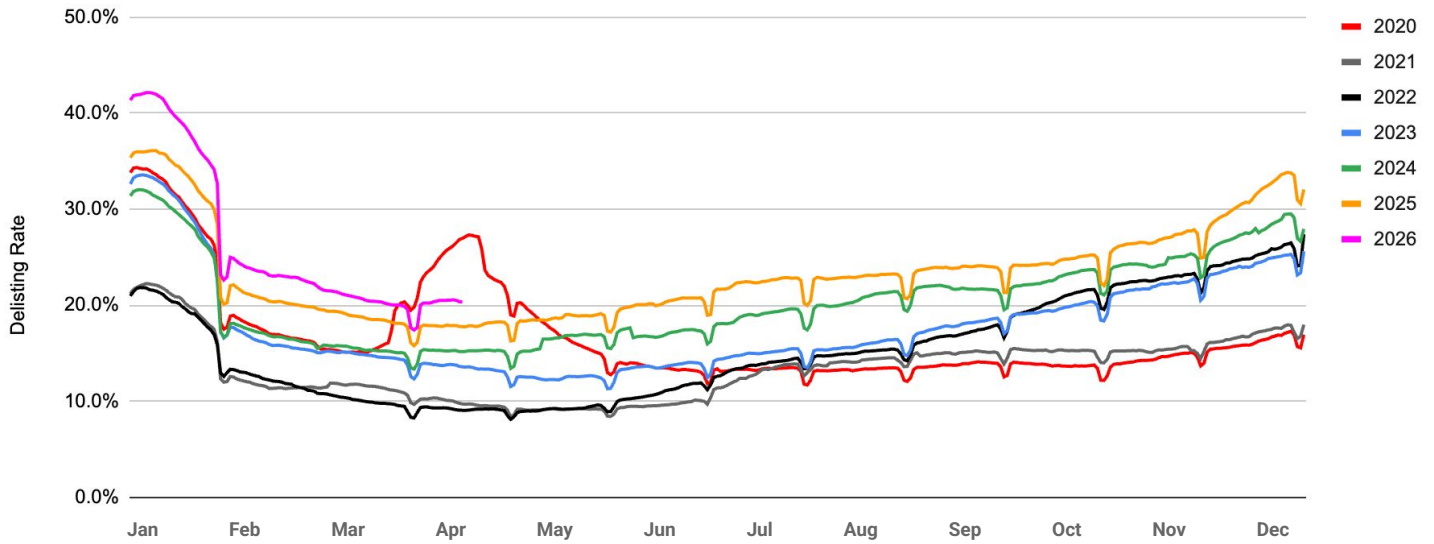
### Trailing 7-Day MLS Active Listings

MLS Data Filtered to Opendoor Markets and Buybox



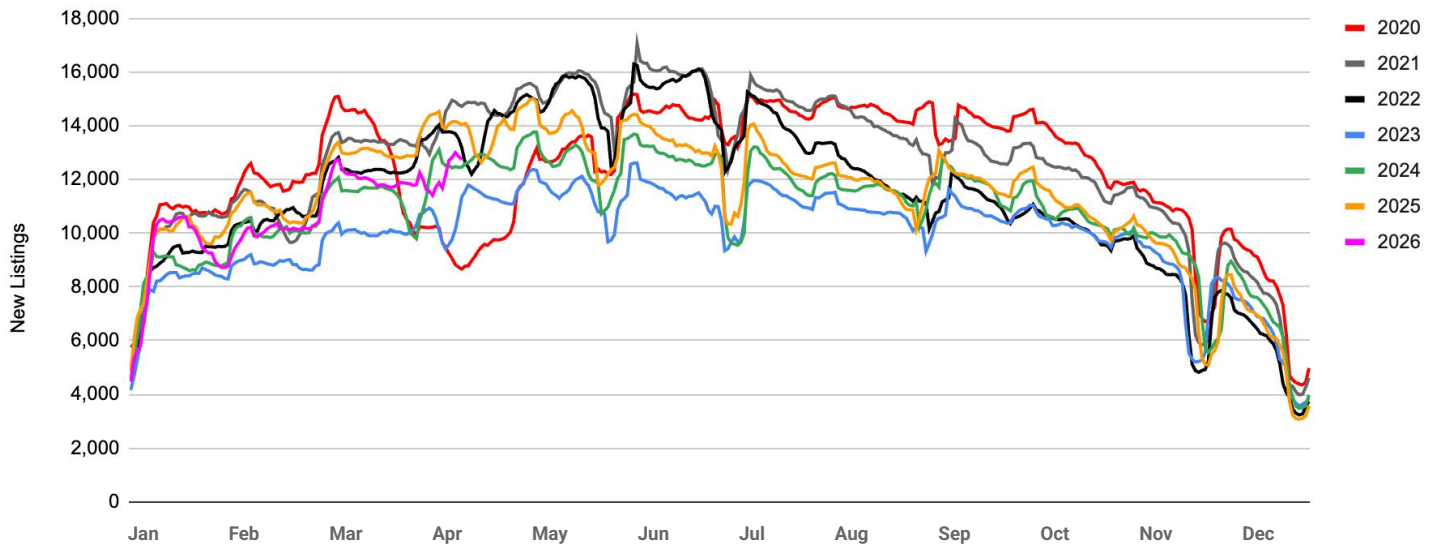
### Trailing 28-Day MLS Daily Delisting to Contract Ratio

MLS Data Filtered to Opendoor Markets and Buybox; excludes California markets



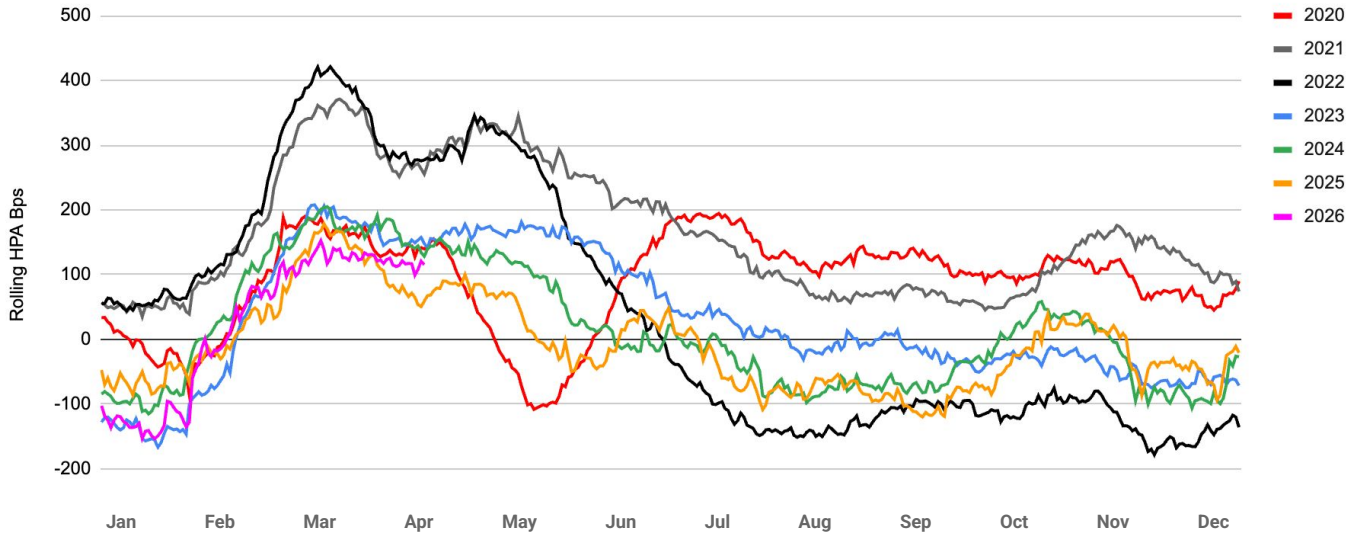
### Trailing 7-Day MLS New Listings

MLS Data Filtered to Opendoor Markets and Buybox



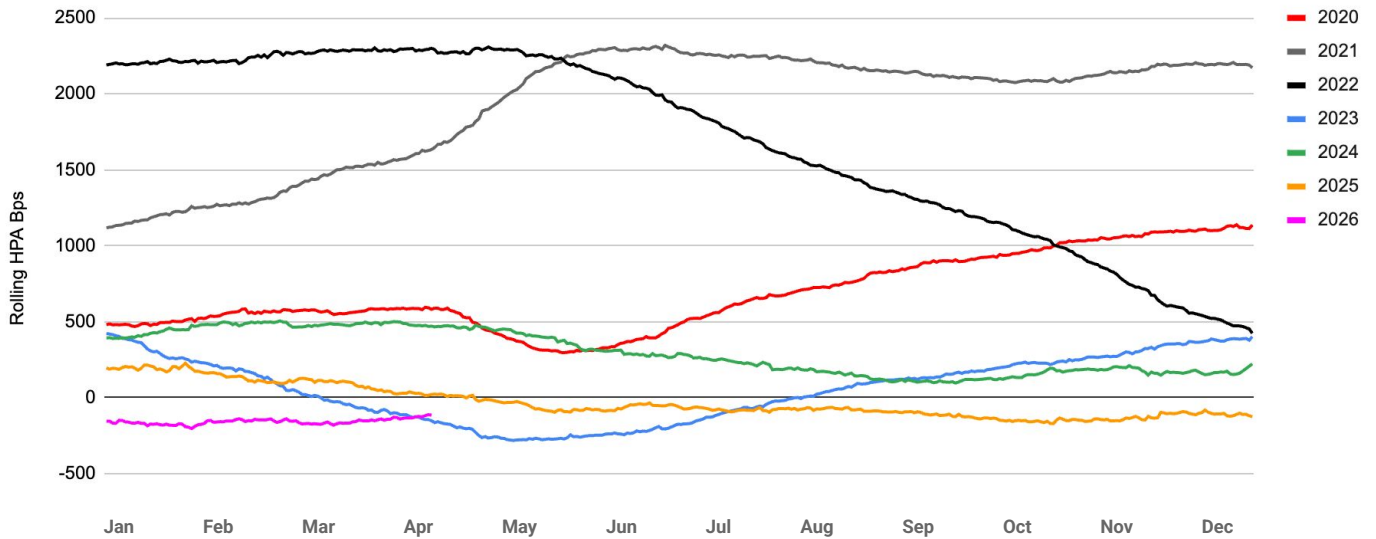
### 30-Day Rolling Home Price Appreciation (HPA)

Weighted to Opendoor Markets; Non-Seasonally Adjusted



### YoY Rolling Home Price Appreciation (HPA)

Weighted to Opendoor Markets; Non-Seasonally Adjusted



### Trailing 28-Day Average of Daily New Delistings

MLS Data Filtered to Opendoor Markets and Buybox; excludes California markets

